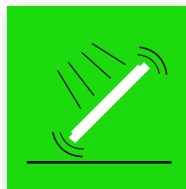




Windows Mobile 6.5



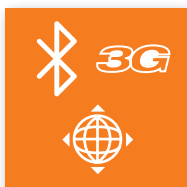
Robust Design



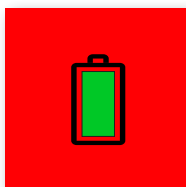
Sealed against Water and Ingress Protection



Sunlight Readable Display



Superior Connectivity



No Power Downtime for the workday

## FIDS CANO GNSS

### Rugged Handheld Computer - High Accuracy GNSS (GPS+GLONASS) with SBAS

Introducing the new FIDS Cano. A water-resistant PDA with resistive touch screen and an amazing sunlight readable display. FIDS Cano features a rugged and drop-proof design - safe to 1.5 meters - and IP67 rating that make it the pinnacle of tough computing in the field.

A detail-oriented field, industrial and mechanical form factor creates a high performance device that is as attractive as it is durable, the perfect fit for activities. The FIDS Cano supports barcode reader 1D/2D applications with the professional expansion kit 1. The Cano has also a built-in high accuracy GNSS receiver that supports SBAS with a precision of <1m.

**The product is marketed by Forest-it Design Sweden AB**

**For further information, please contact: [mail@forest-it.se](mailto:mail@forest-it.se)**

#### Forest it Design

Forest it Design is a leading provider of rugged mobile computers, all-in-One PC, measurement instruments, and GPS/GNSS solutions. The company has offices in Värnamo, Gothenburg, London, Munich and Frankfurt.

- **Värnamo tel:** +46 (0) 370 690 810
- **London tel:** +44 (0) 118 963 7461
- **Frankfurt:** +49 (0) 6081 5769980
- **E-mail SE:** [mail@forest-it.se](mailto:mail@forest-it.se)
- **www.forest-it.se**

- **Göteborg tel:** +46 (0) 31 203 080
- **München tel:** +49 (0) 152 5368 7953
- **E-mail UK:** [mail@forest-it.com](mailto:mail@forest-it.com)
- **E-mail DE:** [mail@forest-it.de](mailto:mail@forest-it.de)
- **www.forest-it.com**





Resistive Touch



5.0MP Camera with Auto-focus



Superior I/O-ports



KeyPad Controls

## Specifications\*

### REFERENCES

- **Description:** FIDS Cano

### DISPLAY

- **Size:** 3.5" TFT LCD, BLANVIEW
- **Resolution:** VGA (480x640)
- **Touch:** Resistive
- **More:** Sunlight Readable, Ambient Light Sensor

### PLATFORM

- **Processor:** 800 MHz
- **Memory:** 512 MB SDRAM
- **Storage on board:** 8GB: Micro SD up to 32 GB

### OPERATING SYSTEM

- Windows Mobile 6.5

### RUGGED FEATURES

- IP-67
- MIL-STD-810G
- 1.5m drop proof

### ENVIRONMENT

- **Temperature**  
Operating: -20°C ~ 60°C  
Storage: -30°C ~ 70°C
- **Humidity**  
Operating: 5% ~ 95%

### KEYPAD

- 30 Keys incl. 7 soft Function
- Alphanumeric
- Camera
- Power On/Off
- Windows

### CAMERA

- Rear facing 5.0MP camera (AF)

### GNSS (GPS+GLONASS)

- **Receiver type:** 72 Channels, L1+G1 (GPS+GLONASS)
- **SBAS:** EGNOS, WAAS, MSAS, GAGAN
- **Time to Fix**  
Cold Start: 29s  
Warm Start: 29s  
Hot Start: <1s
- **Accuracy:** <1m with SBAS

### COMMUNICATIONS

- **WiFi:** 802.11 b/g
- **GNSS:** MMCX
- **Bluetooth:** Class II, v2.1 EDR
- **WWAN:** 3.75G

### I/O INTERFACE

- E-compass/G-sensor/Gyroscope
- USB OTG
- Micro SD slot (up to 32GB)
- RS232
- RFID

### BATTERY

- Li-Ion 3.7V, 3800 mAh

### DIMENSION (L x W x H)

- 20 cm x 9.4 cm x 4.2 cm

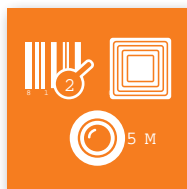
### WEIGHT

- 443 g with battery

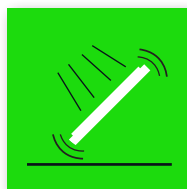
### EXPANSION KIT 1 (Optional)

- Barcode Reader 1D/2D Imager

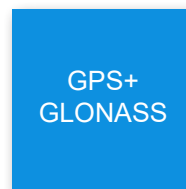
\* Specifications are subject to change without notice



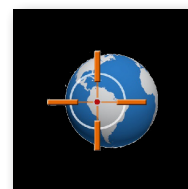
Data Collection



Rugged Features



GNSS



Geo Assist



### Forest it Design

Forest it Design is a leading provider of rugged mobile computers, all-in-One PC, measurement instruments, and GPS/GNSS solutions. The company has offices in Värnamo, Gothenburg, London, Munich and Frankfurt.

- **Värnamo tel:** +46 (0) 370 690 810
- **London tel:** +44 (0) 118 963 7461
- **Frankfurt:** +49 (0) 6081 5769980
- **E-mail SE:** mail@forest-it.se
- **www.forest-it.se**

- **Göteborg tel:** +46 (0) 31 203 080
- **München tel:** +49 (0) 152 5368 7953
- **E-mail UK:** mail@forest-it.com
- **E-mail DE:** mail@forest-it.de
- **www.forest-it.com**